

ADIM
- Mavişehir -

Ege Apartmanı

RAMSA



“We build places to live.”

All images in this catalogue are for visual purposes only, and Ramsa İnşaat reserves the right to make any changes it deems necessary.

www.ramsa.com.tr

Prestigious Life in the Heart of Izmir: **Everything is at Your Fingertips in Mavişehir**

With Adım Mavişehir, we are located in the heart of Izmir, just a few steps away from the most prestigious points of the city. We are located in a place where you can easily reach your daily needs such as shopping malls, banks and public transportation.

RAMSA





- Ease of Transportation
- Proximity to Shopping and Entertainment
- Comfortable and Cozy Living Spaces
- Easy Access to the Most Central Points of Izmir

RAMSA

Comfortable and Convenient
LIVING AREAS

LIVING ROOM

RAMSA



KITCHEN

RAMSA



BEDROOM

RAMSA



BATH

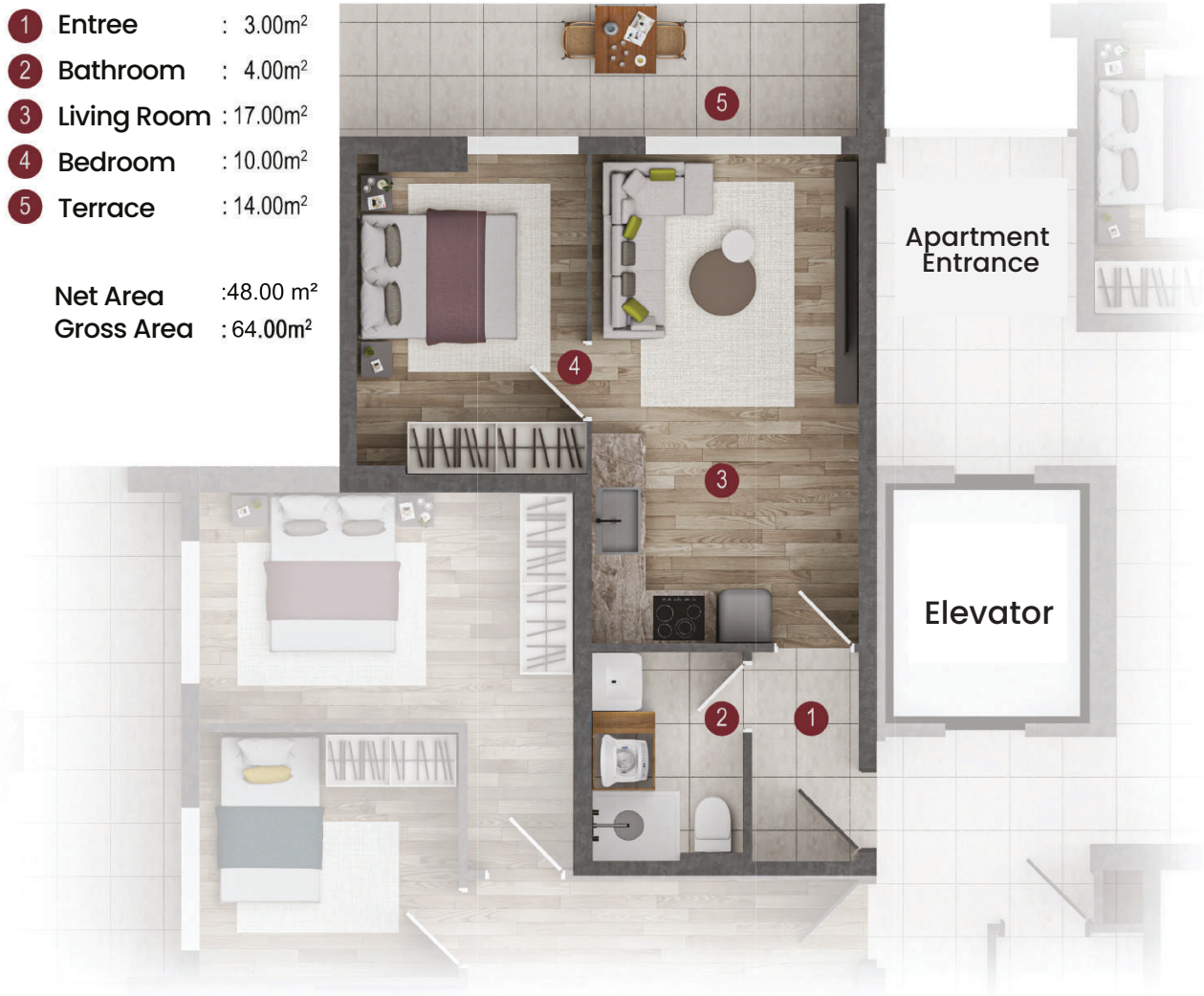
RAMSA



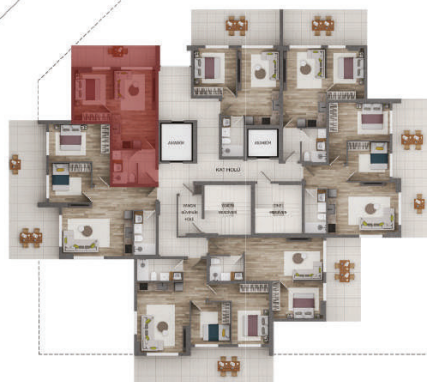
GROUND FLOOR FLAT NO. 1

- 1 Entree : 3.00m²
- 2 Bathroom : 4.00m²
- 3 Living Room : 17.00m²
- 4 Bedroom : 10.00m²
- 5 Terrace : 14.00m²

Net Area : 48.00 m²
Gross Area : 64.00m²



6504
Street



6503 Street

Park Area



RAMSA

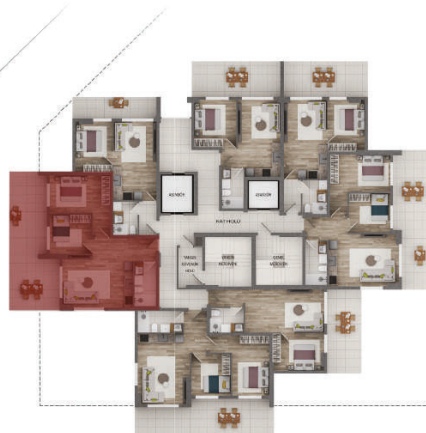


GROUND FLOOR FLAT NO.2

- 1 Entree : 3.00m²
- 2 Bathroom : 5.00m²
- 3 Living Room : 21.00m²
- 4 Child Room : 10.00m²
- 5 Bedroom : 15.00m²
- 6 Terrace : 25.00m²

Net Area : 79.00 m²
Gross Area : 102.00 m²

6504
Street



6503 Street

Park Area



RAMSA



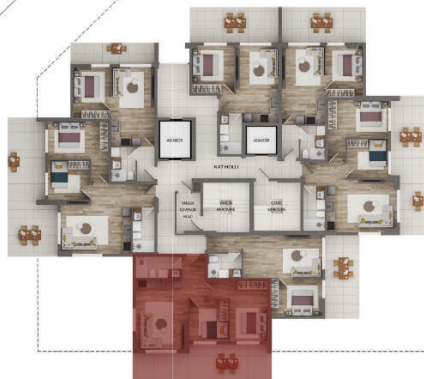
GROUND FLOOR FLAT NO.3

- 1 Entree : 4.00m²
- 2 Bathroom : 5.00m²
- 3 Living Room : 19.00m²
- 4 Child Room : 10.00m²
- 5 Bedroom : 15.00m²
- 6 Terrace : 23.00m²

Net Area : 76.00 m²
Gross Area : 98.00m²



6504
Street

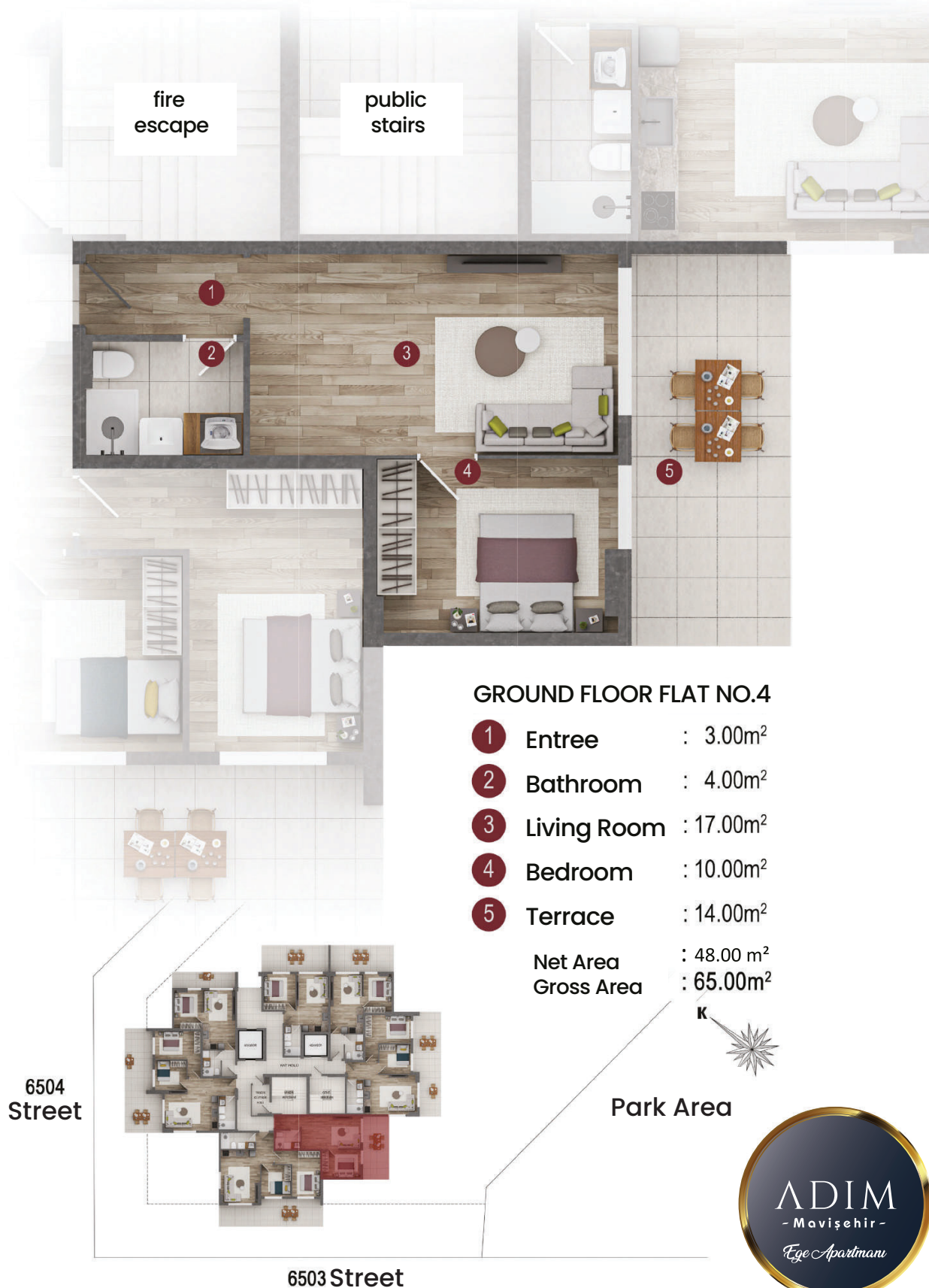


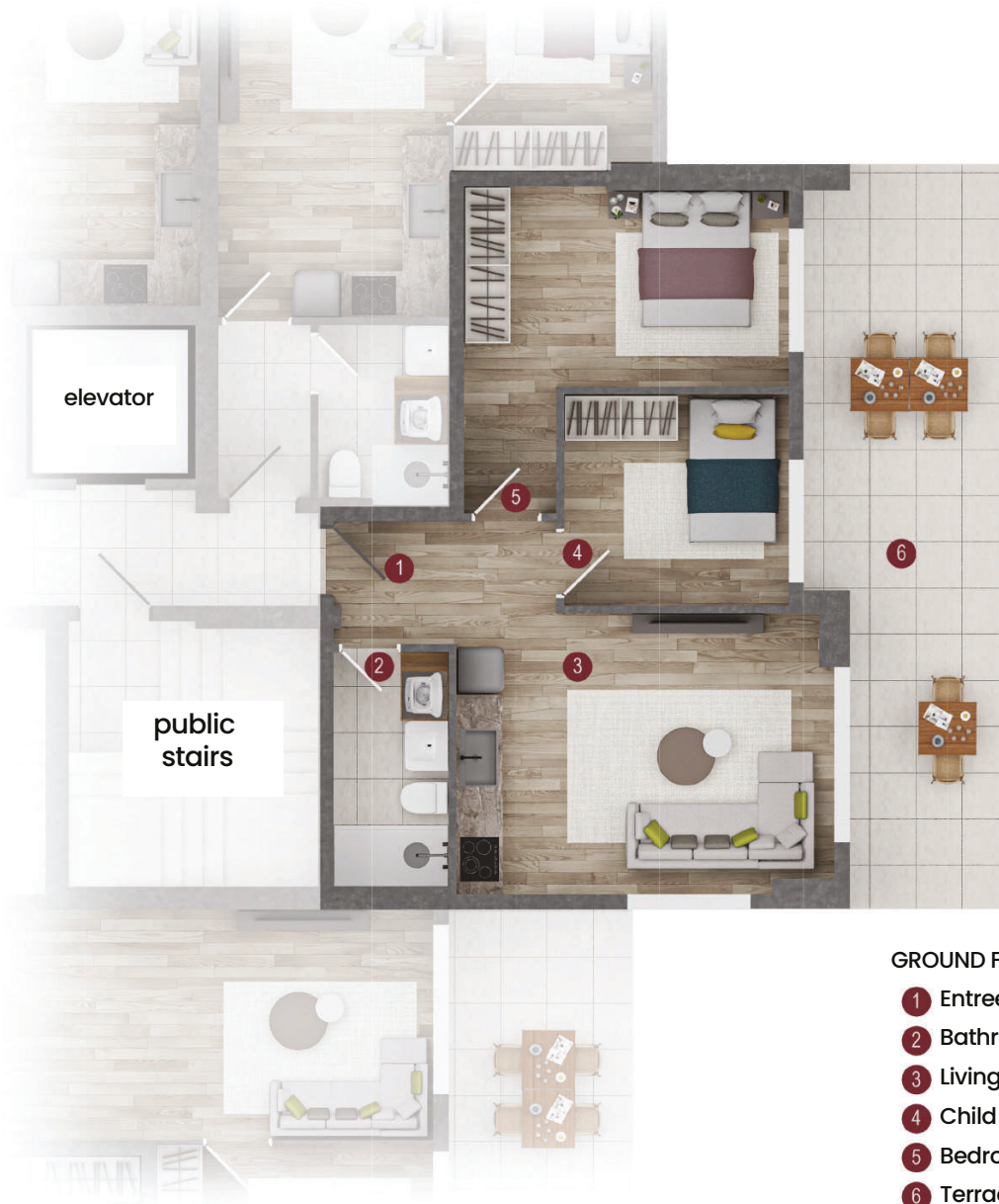
6503 Street

Park Area



RAMSA





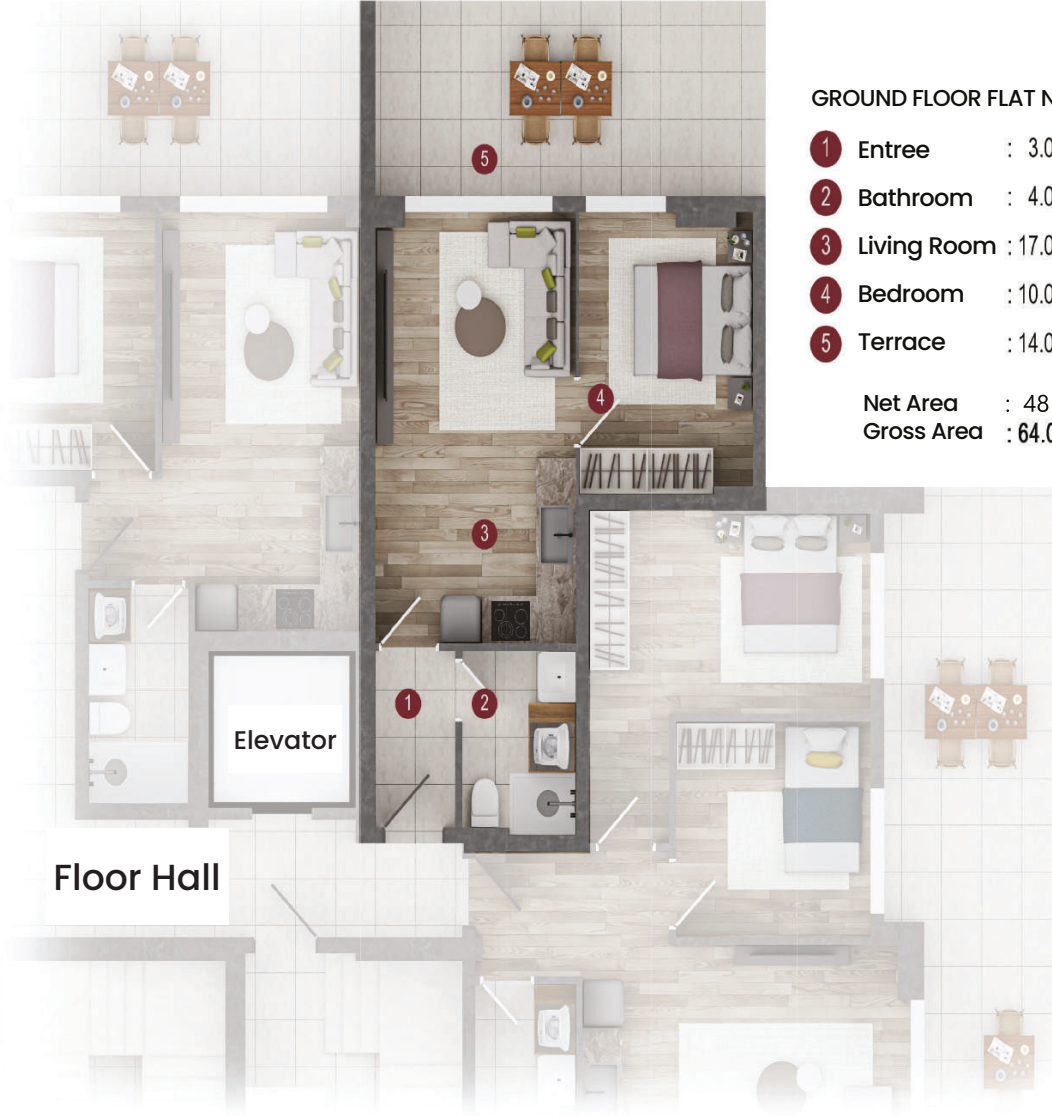
GROUND FLOOR FLAT NO.5

- 1 Entree : 3.00m²
- 2 Bathroom : 5.00m²
- 3 Living Room : 19.00m²
- 4 Child Room : 10.00m²
- 5 Bedroom : 15.00m²
- 6 Terrace : 23.00m²

Net Area : 75.00 m²
Gross Area : 97.50 m²



RAMSA



GROUND FLOOR FLAT NO.6

- 1 Entree : 3.00m²
- 2 Bathroom : 4.00m²
- 3 Living Room : 17.00m²
- 4 Bedroom : 10.00m²
- 5 Terrace : 14.00m²

Net Area : 48 m²
Gross Area : 64.00m²

6504
Street

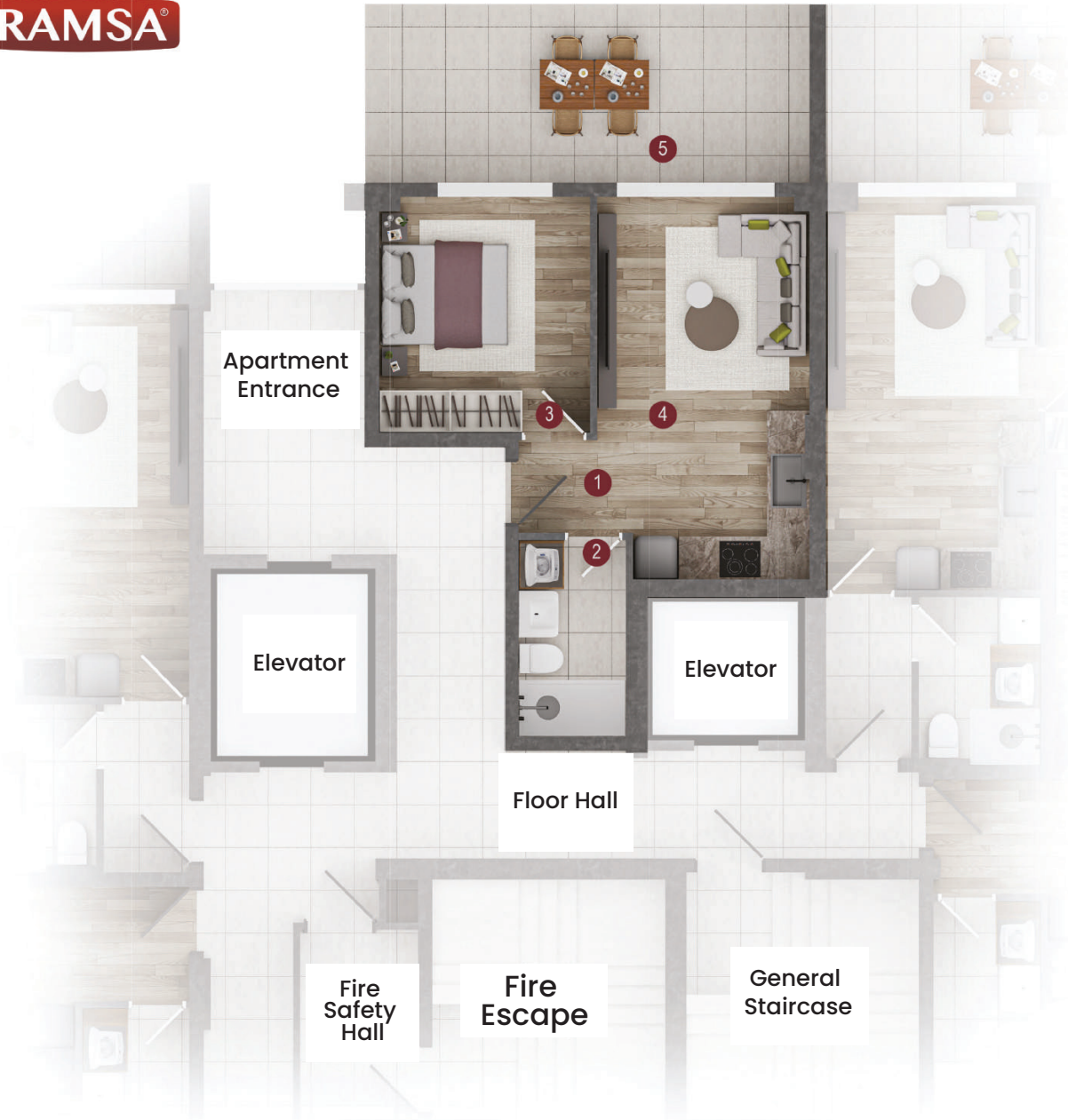


6503 Street

Park Area



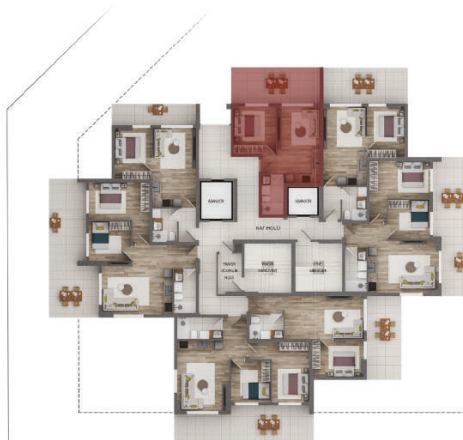
RAMSA



GROUND FLOOR FLAT NO.7

1	Entree	: 2.00m ²
2	Bathroom	: 4.00m ²
3	Living Room	: 16.00m ²
4	Bedroom	: 11.00m ²
5	Terrace	: 16.00m ²
	Net Area	: 49.00 m ²
	Gross Area	: 64.00m ²

6504
Street



6503 Street

Park Area



RAMSA



9th Floor Flat No. 40

- 1 Entree 11.00m²
- 2 Living Room + Kitchen 24.40m²
- 3 Balcony 5.00m²
- 4 Child Room 11.00m²
- 5 Child Room 11.00m²
- 6 Terrace 9.00m²
- 7 Bedroom 13.00m²
- 8 Private Bath. 2.50m²
- 9 Public Bath. 4.00m²

Net Area 91.00 m²
Gross Area 123.00m²

6504
Street

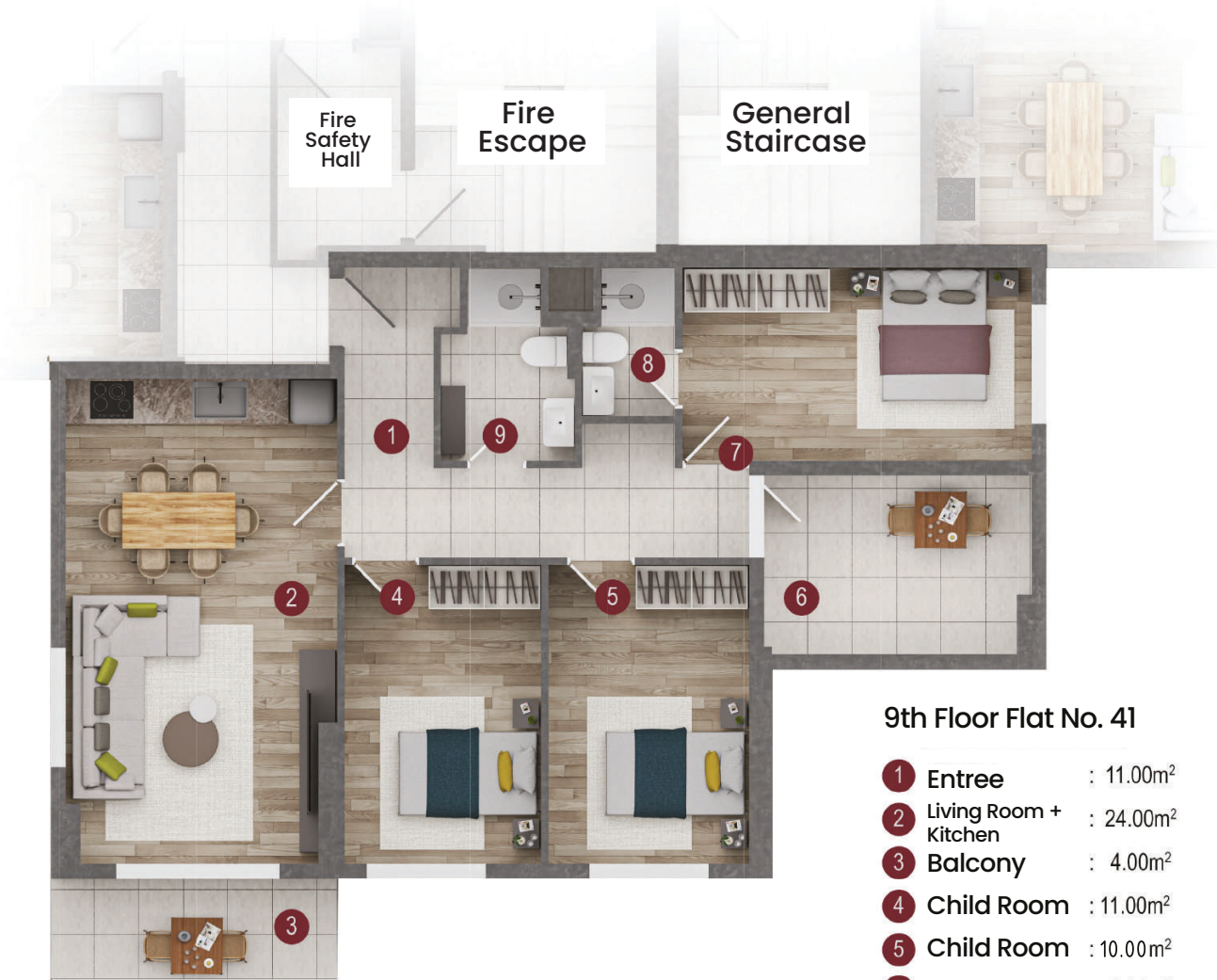


6503 Street

Park Area



RAMSA



9th Floor Flat No. 41

- 1 Entree : 11.00m²
- 2 Living Room + Kitchen : 24.00m²
- 3 Balcony : 4.00m²
- 4 Child Room : 11.00m²
- 5 Child Room : 10.00m²
- 6 Terrace : 9.00m²
- 7 Bedroom : 13.00m²
- 8 Private Bath. : 2.50m²
- 9 Public Bath. : 4.00m²

Net Area : 89.00m²
Gross Area : 113.00m²

6504
Street

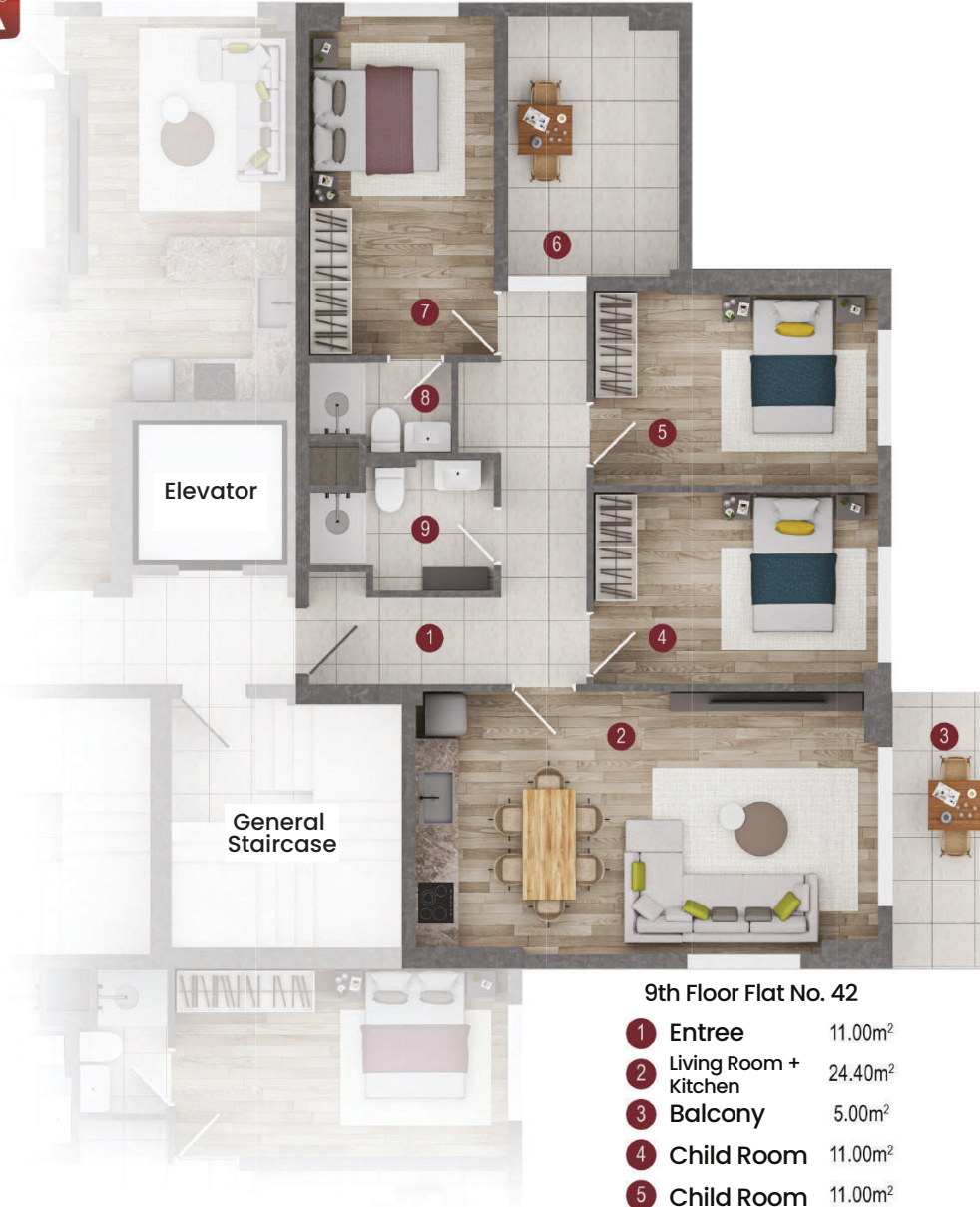


6503 Street

Park Area



RAMSA

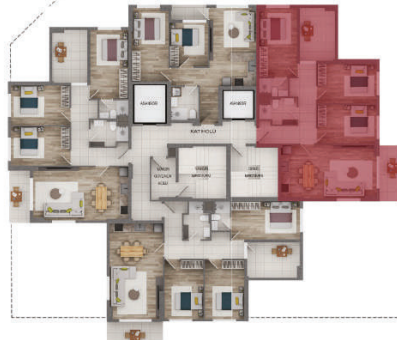


9th Floor Flat No. 42

- 1 Entree 11.00m²
- 2 Living Room + Kitchen 24.40m²
- 3 Balcony 5.00m²
- 4 Child Room 11.00m²
- 5 Child Room 11.00m²
- 6 Terrace 9.00m²
- 7 Bedroom 13.00m²
- 8 Private Bath. 2.50m²
- 9 Public Bath. 4.00m²

Net Area : 91.00m²
Gross Area : 123.00m²

6504
Street

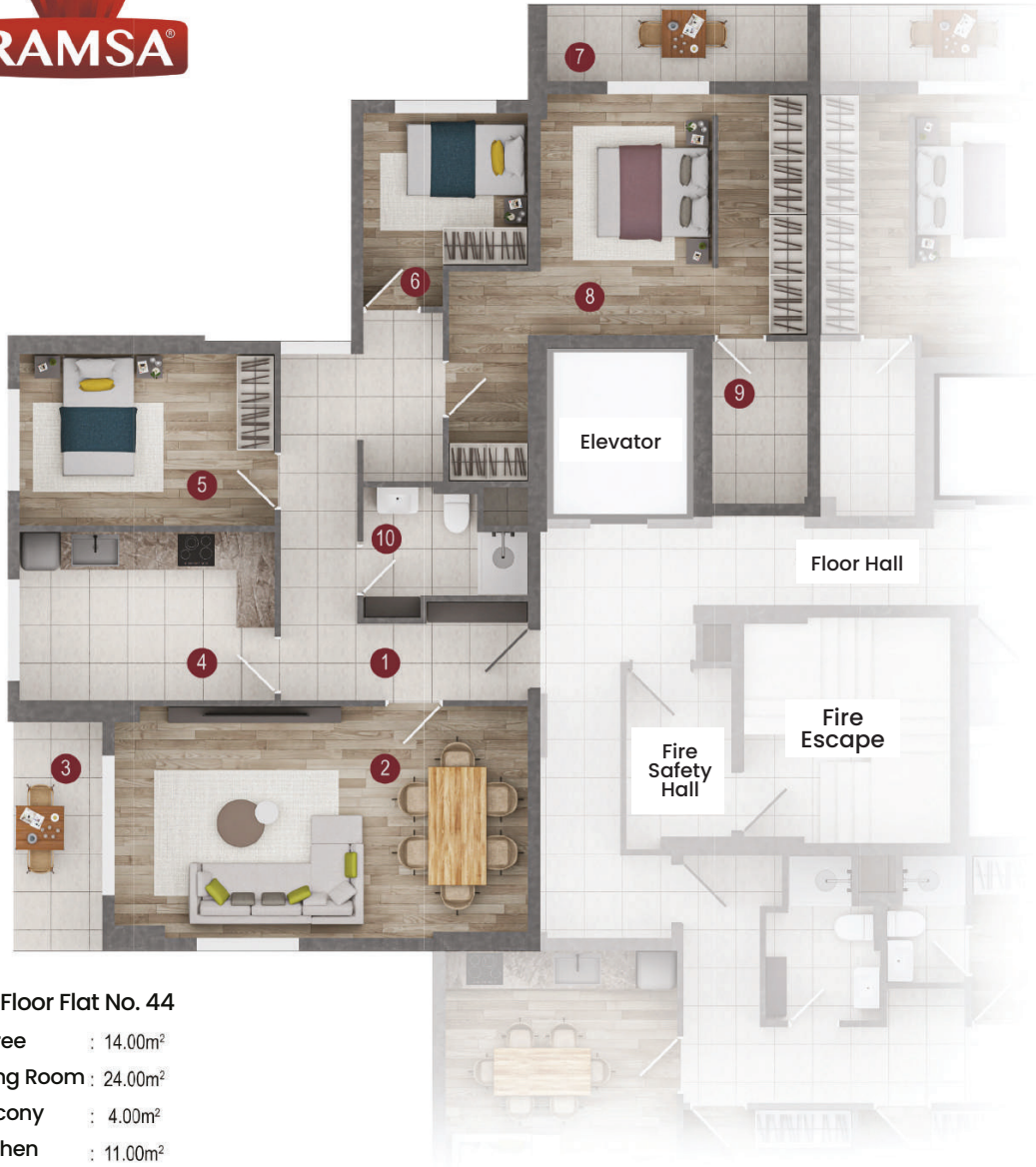


6503 Street

Park Area



RAMSA

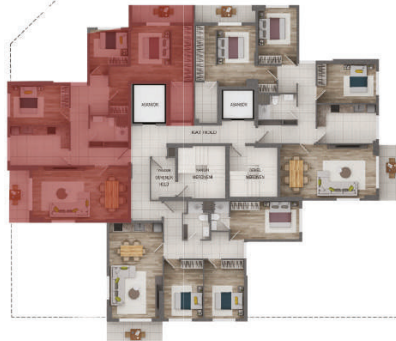


10th Floor Flat No. 44

- 1 Entree : 14.00m²
- 2 Living Room : 24.00m²
- 3 Balcony : 4.00m²
- 4 Kitchen : 11.00m²
- 5 Child Room : 11.00m²
- 6 Child Room : 7.50m²
- 7 Balcony : 4.50m²
- 8 Bedroom : 20.00m²
- 9 Private Bath. : 4.00m²
- 10 Public Bath. : 4.50m²

Net Area : 104.5 m²
Gross Area : 135.00m²

6504
Street

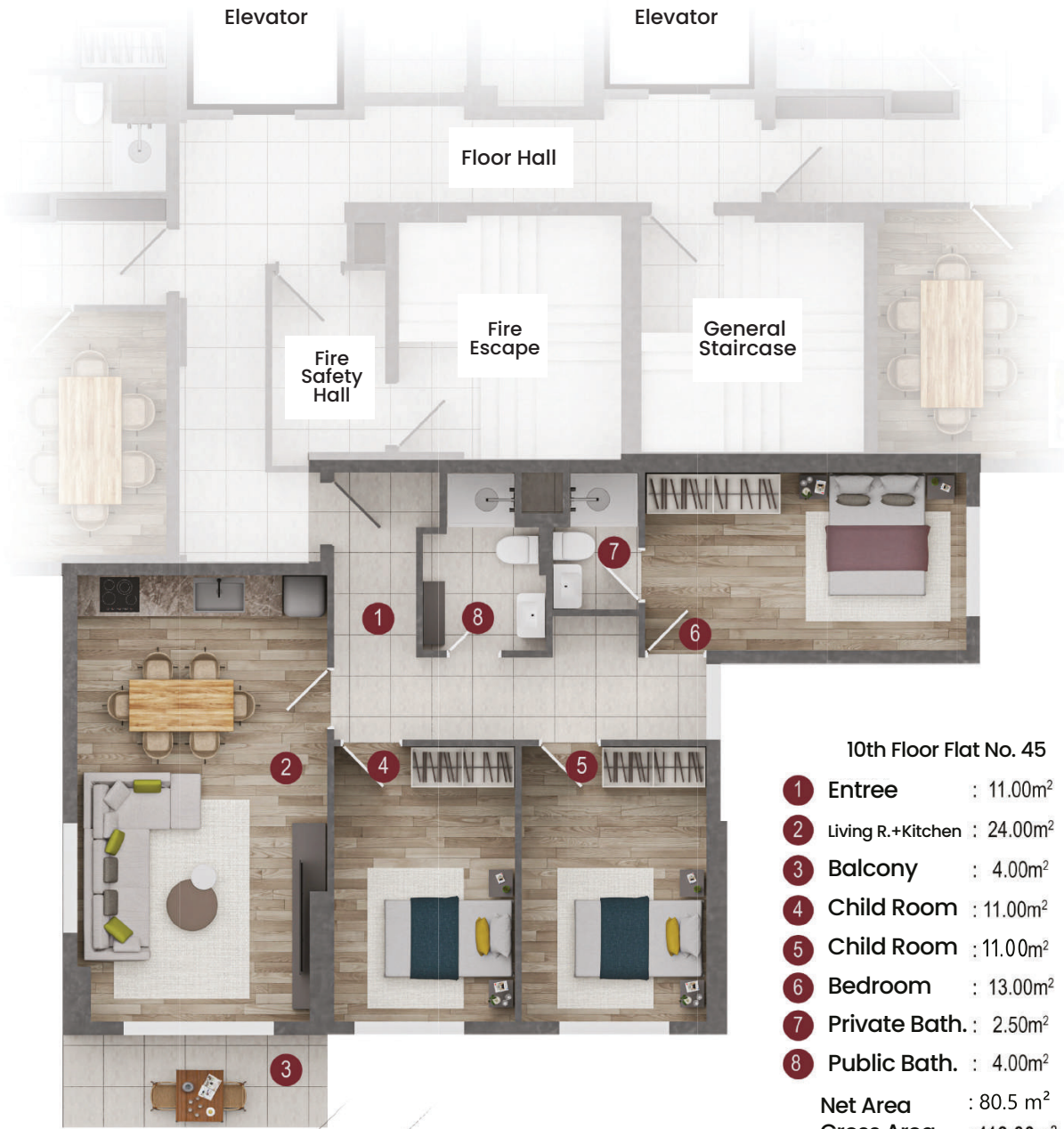


6503 Street

K
Park Area



RAMSA

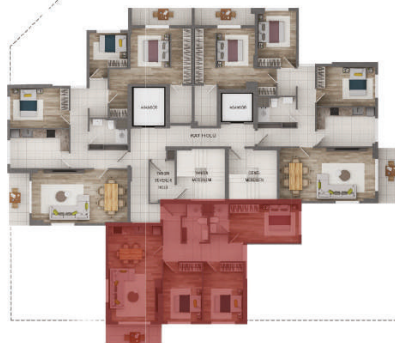


10th Floor Flat No. 45

- 1 Entree : 11.00m²
- 2 Living R.+Kitchen : 24.00m²
- 3 Balcony : 4.00m²
- 4 Child Room : 11.00m²
- 5 Child Room : 11.00m²
- 6 Bedroom : 13.00m²
- 7 Private Bath. : 2.50m²
- 8 Public Bath. : 4.00m²

Net Area : 80.5 m²
Gross Area : 113.00m²

6504
Street



6503 Street

Park Area



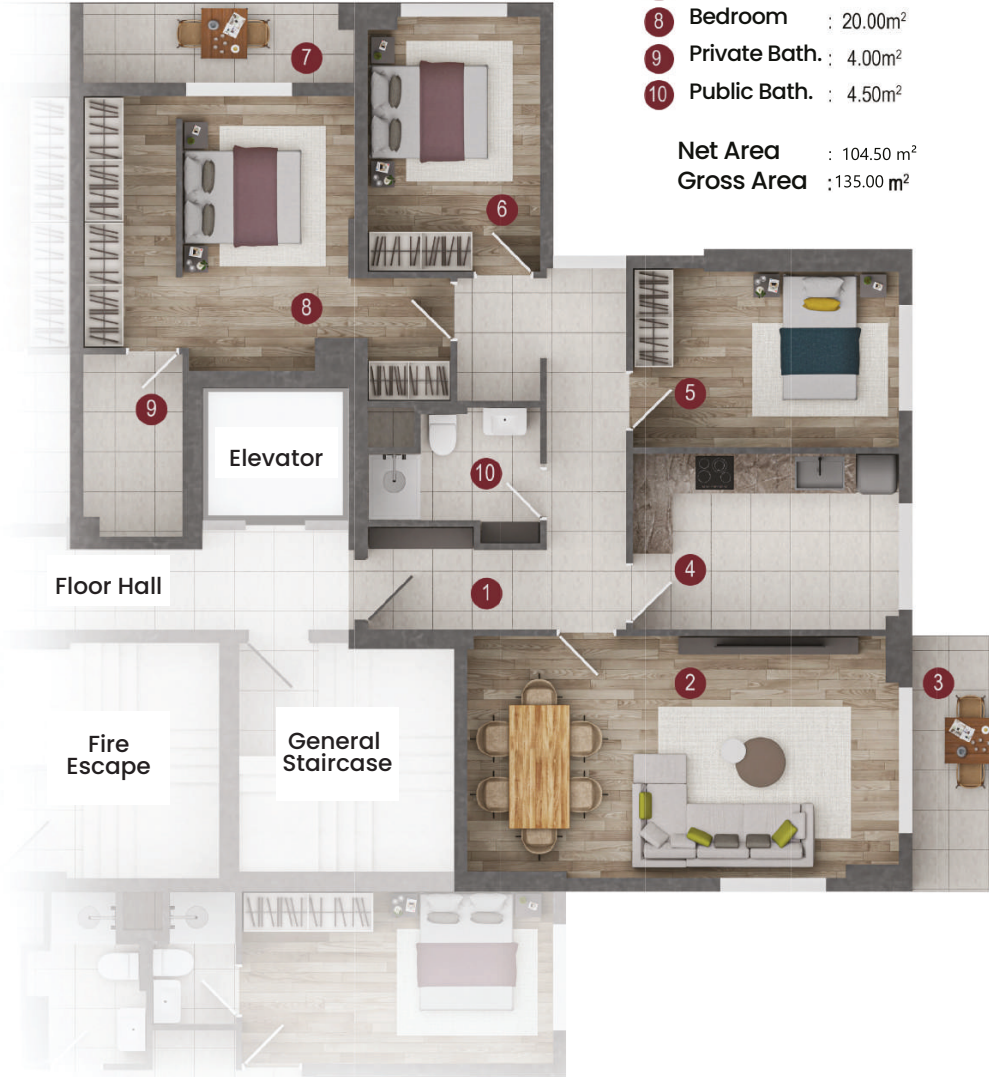
RAMSA



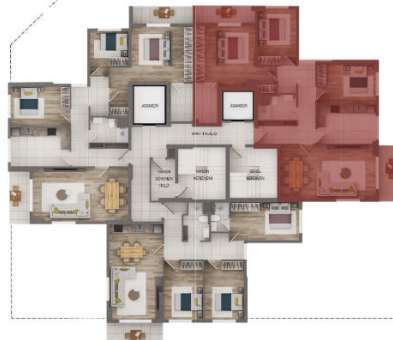
10th Floor Flat No. 46

- 1 Entree : 13.00m²
- 2 Living Room : 24.00m²
- 3 Balcony : 4.00m²
- 4 Kitchen : 11.00m²
- 5 Child Room : 11.00m²
- 6 Child Room : 10.00m²
- 7 Balcony : 4.50m²
- 8 Bedroom : 20.00m²
- 9 Private Bath. : 4.00m²
- 10 Public Bath. : 4.50m²

Net Area : 104.50 m²
Gross Area : 135.00 m²



6504
Street



6503 Street

Park Area



RAMSA



Ege Apartmanı

RAMSA



“We build places to live.”

All images in this catalogue are for visual purposes only, and Ramsa İnşaat reserves the right to make any changes it deems necessary.

www.ramsa.com.tr



Adım
Bornova



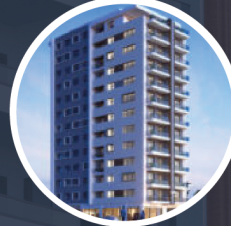
Adım
Kemalpaşa



Adım
Göktepe



Çamdibi
Life



Çamdibi
Four



Çamdibi
Sancak



Çamdibi
Barbaros



Çamdibi
Konutları



Kent
Bornova



Ali Şaşal
Plaza



Ramsa
Ulukent



Saklı
Bahçe



Altınçam
Konutları





Port
Çandarlı

Project Adress :6505 Sokak No:3 Karşıyaka / İzmir

 /ramsainsaat

 /ramsainsaat

 /ramsainsaat

 0533 063 88 87 |  0232 374 44 19

 Kamil Tunca Bulvarı, No:180
Çamdibi / İzmir

www.ramsa.com.tr
info@ramsai.com.tr



"We build places to live."

www.ramsa.com.tr